

Replaceable Delay Line Normal Probe

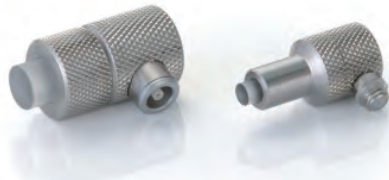


D Series

Ordering Information:

D2.5-10L

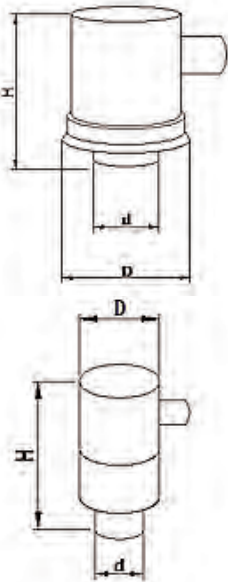
Series Code ———— | Connector Type
 Frequency ———— | Crystal dimension $\Phi 10$



DM Series

Application:

Mainly used for inspecting flaws parallel to/ near to the inspected object surface, applicable for inspected objects with sharp edge. If the delay line is made of high-temperature material, it can also inspect high-temperature objects.



Series Code	Crystal Size (mm)	D	d	H
D/DM	$\Phi 10$	$\Phi 18$	$\Phi 11$	30
	$\Phi 14$	$\Phi 22$	$\Phi 15$	32
	$\Phi 20$	$\Phi 29$	$\Phi 21$	38
	$\Phi 24$	$\Phi 33$	$\Phi 25$	44

Series Code	Crystal Size (mm)	D	d	H
DM	$\Phi 3$	$\Phi 12$	$\Phi 4$	26
	$\Phi 6$	$\Phi 14.5$	$\Phi 8$	28.8

Mid Frequency Bandwidth Series

Series Code	Frequency (MHz)	Crystal Size (mm)	Connector Type
D	2/2.25/2.5/4/5	$\Phi 10, \Phi 14, \Phi 20, \Phi 24$	Blank: BNC/ L: LEMO 00/ MD: Microdot

Wide Frequency Bandwidth Series

Series Code	Frequency (MHz)	Crystal Size (mm)	Connector Type
DM	2/2.25/2.5	$\Phi 10, \Phi 14$	L: LEMO 00/ MD: Microdot
	4/5	$\Phi 6, \Phi 10$	
	7.5/ 10	$\Phi 3, \Phi 6$	

* 7.5/10MHz is also available, please refer to Thickness Gauge Probe series

*Probes with crystal size 3mm are only compatible with Microdot.